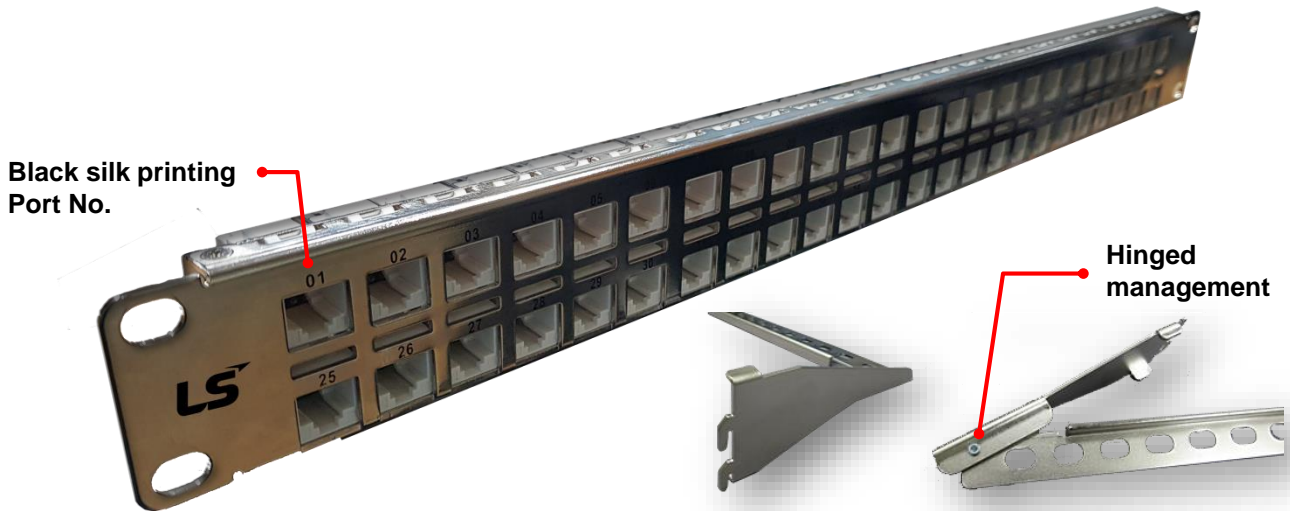


DS CODE:  
**300513**

## LS Simple™ Cabling Solution

### LS-PP-48P-E-WM-1U



### Description

LS Simple™ High Density 1Unit 48-Port Flat Type Empty Panel

- For Category 5e~6A Unshielded and Shielded Modular Jack series
- Mounted on 19" standard rack
- Inserting hole fully complies with RJ-45 of 47 CFR part 68
- Easy handling by Hook & Hinged Wire Management (Compatible with existing management)
- Application of special structure to improve workability (Middle side hole)
- Panel & Wire Management color : Silver
- RoHS2 compliant

### Part Numbers

Description	Dimension (H x W, mm)	Part Numbers	Compatible Items
1Unit 48-Port Flat Type Empty Panel with Wire Management	44.1 x 482.6	LS-PP-48P-E-WM-1U	Modular Jack: LS-MJ-UC5E(6)(6A)-xx-E(S)RI series LS-MJ-SC5E-xx-RIDC series LS-MJ-SC6(A)-xx-ERI series

DS CODE:  
300513

# LS Simple™ Cabling Solution

## LS-PP-48P-E-WM-1U

### Drawing

